

User Documentation

TH LINK MAINTENANCE TOOL

1. Firmware update procedure

The TH LINK MAINTENANCE TOOL helps the user to efficiently update TH LINK devices in a network. It is not an officially released product and is available on demand only. Instead of updating the firmware of every TH LINK one after another, recent versions of TH LINK firmware can be updated automatically using the TH LINK MAINTENANCE TOOL.

1. The TH LINK MAINTENANCE TOOL needs to be installed on any computer that has access to the automation network.
2. Open the TH LINK MAINTENANCE TOOL.
3. Click the “Search”-button to automatically list all TH LINK devices (no TH LINK PC) that can be found in the network. The TH LINKs are sorted by their serial number.
4. In case of missing TH LINK devices, they can be added manually to the list using the “Add Manually”-button.
5. Select the TH LINK devices that need to be updated. All TH LINK devices can be selected with “Select All”.
6. Browse a valid firmware file that is saved on the computer
7. Click “Update FW” to start the automated update procedure. The TH LINK MAINTENANCE TOOL will ask the user for a password. The default password is “FUT12345”.
8. The selected firmware will be uploaded to the TH LINKs one by one.
9. When the update for all selected TH LINKs is finished, the user will be notified.

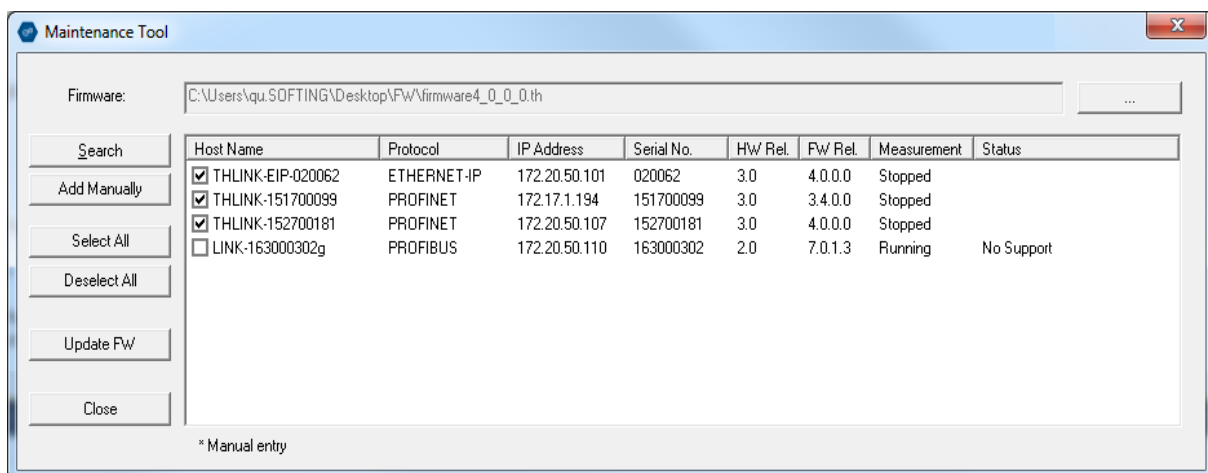


Figure 1: TH LINK Maintenance Tool

2. Important notes

This maintenance tool is designed to help the user to update the firmware for the TH LINK Industrial Ethernet devices more efficiently. Before you start the tool, please notice the following:

1. The network interfaces (e.g. network cards) of the PC must be configured properly so that the to-be-updated TH LINK devices can be reached from this PC.
2. To search the TH LINK devices in the network, this tool uses UDP multicast requests over port 49152 to port $(49152 + \text{number of the network adapters of the PC})$, please enable the communication via those ports in the firewall configuration.
3. If a TH LINK device is not reachable via multicast, you may add the IP of the device manually. In that case please make sure the device is in running state (stopped TH LINKs won't be detected using manual IP-search).
4. Please use only officially delivered firmware from Softing.
5. To update the firmware, TH Links must be locked, please close any browsers connected to the devices to avoid failures.
6. Automated firmware update for TH LINK PROFIBUS devices is not supported by the maintenance tool.